



NSC

Apple II Computer No Slot Clock

November 6, 2019

Installation Manual

NSC



Apple II Computer No Slot Clock

Customer Satisfaction

The No Slot Clock (NSC) comes with a lifetime warranty to you the original purchaser.

Limitation on Warranties and Liability

Even though ReActiveMicro.com has tested the hardware described in this manual and reviewed its contents, neither ReActiveMicro.com nor its affiliates make any warranty or representation, either express or implied, with respect to this manual or to the hardware described in this manual, their quality, performance, merchantability, or fitness for any particular purpose. As a result, this hardware and manual are sold “as is”, and you the purchaser are assuming the entire risk as to their quality and performance. In no event will ReActiveMicro.com or its suppliers be liable for direct, indirect, incidental, or consequential damages resulting from any defect in the hardware or manual, even if they have been advised of the possibility of such damages.

In particular, they shall have no liability for any programs or data stored in or used with ReActiveMicro.com products, including the costs of recovering or reproducing these programs or data. Some states do not allow the exclusion or limitation of implied warranties or liability for incidental or consequential damages, so the above limitation or exclusion may not apply to you.

ReActiveMicro

Office Toll Free: (800) REACTIVE (732-2848)

Office/Mobile Direct: (856) 779-1900

support@reactivemicro.com



www.reactivemicro.com



<https://m.facebook.com/reactivemicrousa>



@reactivemicro



The No Slot Clock (NSC) will enable the Apple //c to have a ProDOS compatible clock. It works by patching ProDOS to allow it to see the Clock.

Installation of the NSC requires that you disassemble your Apple //c.

You will need an I.C. extracting tool, or small flat blade screw driver.

The NSC will be installed in the ROM socket at location D-19 on the mainboard. The existing ROM will be re-installed on top of the clock.

- 1) Remove the top half of the case on your Apple //c
- 2) Remove the keyboard (it lifts out and the connector pulls off of the motherboard)
- 3) Familiarize yourself with what you see: (see Mainboard Image next page)
- 4) Locate the ROM chip. It will be either 342-0272 or 342-0033. (It could be something else)
- 5) Being careful to not bend any pins, install the NSC into the empty socket (Watch for pin #1)
- 6) Re-install your ROM into the socket at location D-19m on the main board making sure to put the notch to the left and not bend any pins. Push firmly to make sure everything is tight
- 7) Reassemble your computer.

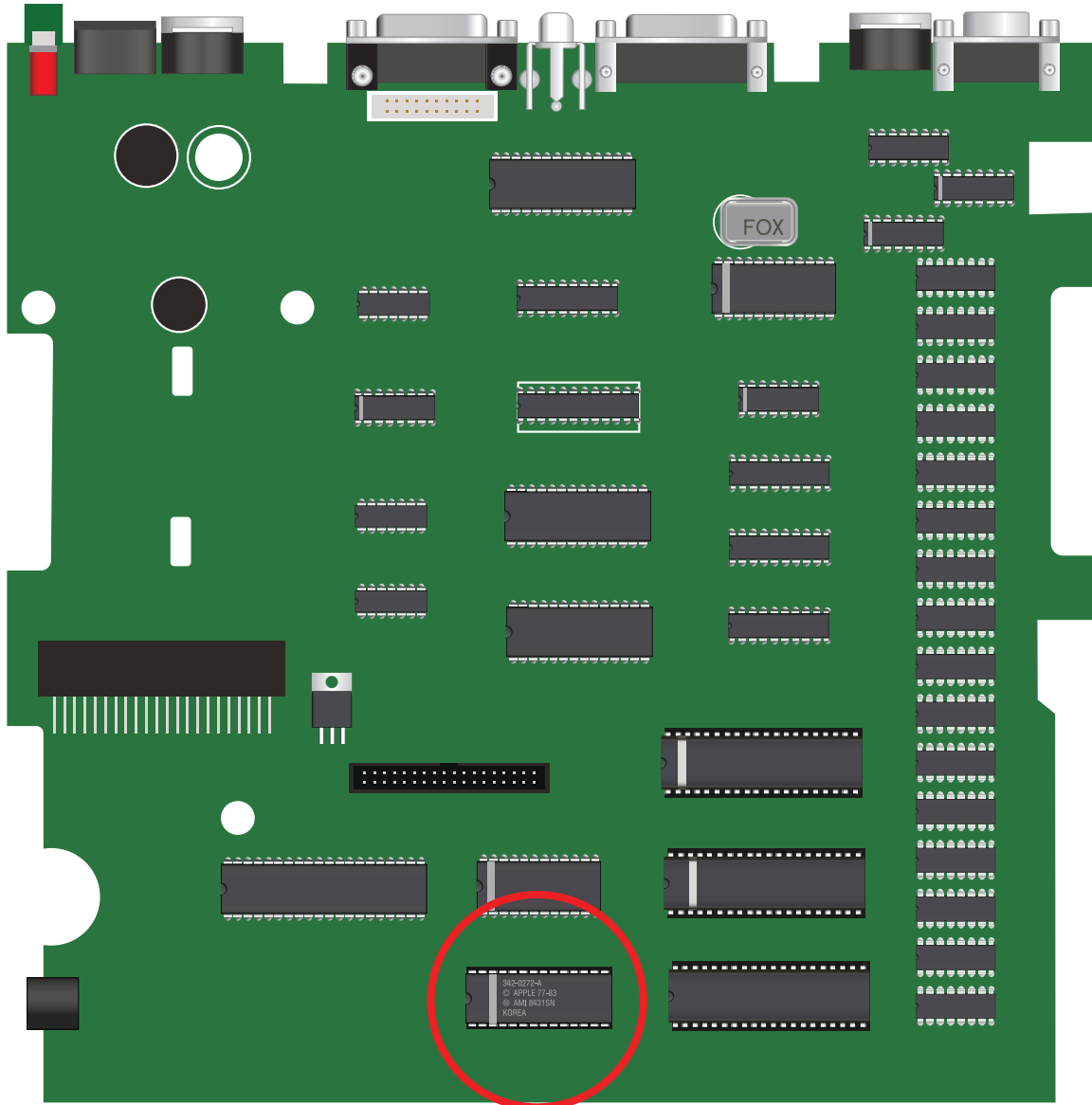
You are done!

Boot the NSC disk and set the Clock

Then install the ProDOS patch and it's ready to be used. ProDOS will automatically time and date stamp your files.

Note: If your //c or //c plus is accelerated, the NSC software will not run correctly. Be sure to disable any acceleration first, then set the Clock.

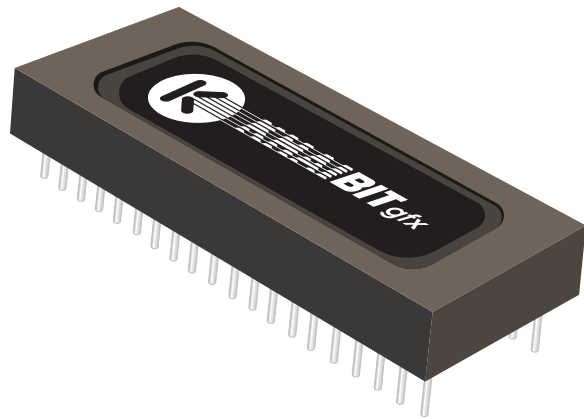
Apple //c Mainboard General Layout



Remove ROM & Install Clock Chip Here.

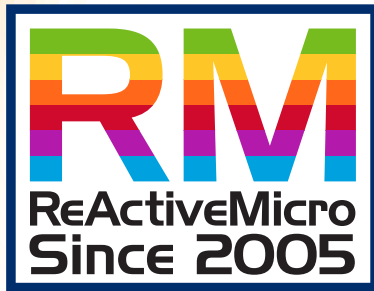
This notch on the left side of the chip means PIN #1 and must be inserted back the same way.

On your //c, all notches are towards the left.



Apple, the Apple logo, are trademarks of Apple Inc.,
registered in the U.S. and other countries.





www.reactivemicro.com