



NSC



Apple II Computer No Slot Clock

November 6, 2019

Installation Manual

NSC



Apple II Computer No Slot Clock

Customer Satisfaction

The No Slot Clock (NSC) comes with a lifetime warranty to you the original purchaser.

Limitation on Warranties and Liability

Even though ReActiveMicro.com has tested the hardware described in this manual and reviewed its contents, neither ReActiveMicro.com nor its affiliates make any warranty or representation, either express or implied, with respect to this manual or to the hardware described in this manual, their quality, performance, merchantability, or fitness for any particular purpose. As a result, this hardware and manual are sold “as is”, and you the purchaser are assuming the entire risk as to their quality and performance. In no event will ReActiveMicro.com or its suppliers be liable for direct, indirect, incidental, or consequential damages resulting from any defect in the hardware or manual, even if they have been advised of the possibility of such damages.

In particular, they shall have no liability for any programs or data stored in or used with ReActiveMicro.com products, including the costs of recovering or reproducing these programs or data. Some states do not allow the exclusion or limitation of implied warranties or liability for incidental or consequential damages, so the above limitation or exclusion may not apply to you.

ReActiveMicro

Office Toll Free: (800) REACTIVE (732-2848)

Office/Mobile Direct: (856) 779-1900

support@reactivemicro.com



www.reactivemicro.com



<https://m.facebook.com/reactivemicrousa>



[@reactivemicro](https://twitter.com/reactivemicro)



The No Slot Clock (NSC) will enable the Apple IIe to have a ProDOS compatible clock. It works by patching ProDOS to allow it to see the Clock.

Installation of the (NSC) requires that you remove the top cover of your Apple IIe. You will need an I.C. extracting tool, or small flat blade screw driver.

The NSC will be installed in the “CD” ROM socket at location “C66” on the mainboard. The existing ROM will be re-installed on top of the clock.

- 1) Remove the top cover of the case on your Apple IIe Personal Computer
- 2) Familiarize yourself with what you see: (see Mainboard Images - following pages)
- 3) Locate the “CD” ROM chip at location C66 on the mainboard
- 4) Being careful to not bend any pins, install the NSC into the empty socket (Watch for pin #1)
- 5) Re-install your “CD” ROM chip into the socket on top of the No Slot Clock (NSC), make sure to put the notch facing the keyboard and not to bend any pins. Push firmly to make sure everything is tight
- 6) Put top cover back in place on your computer.

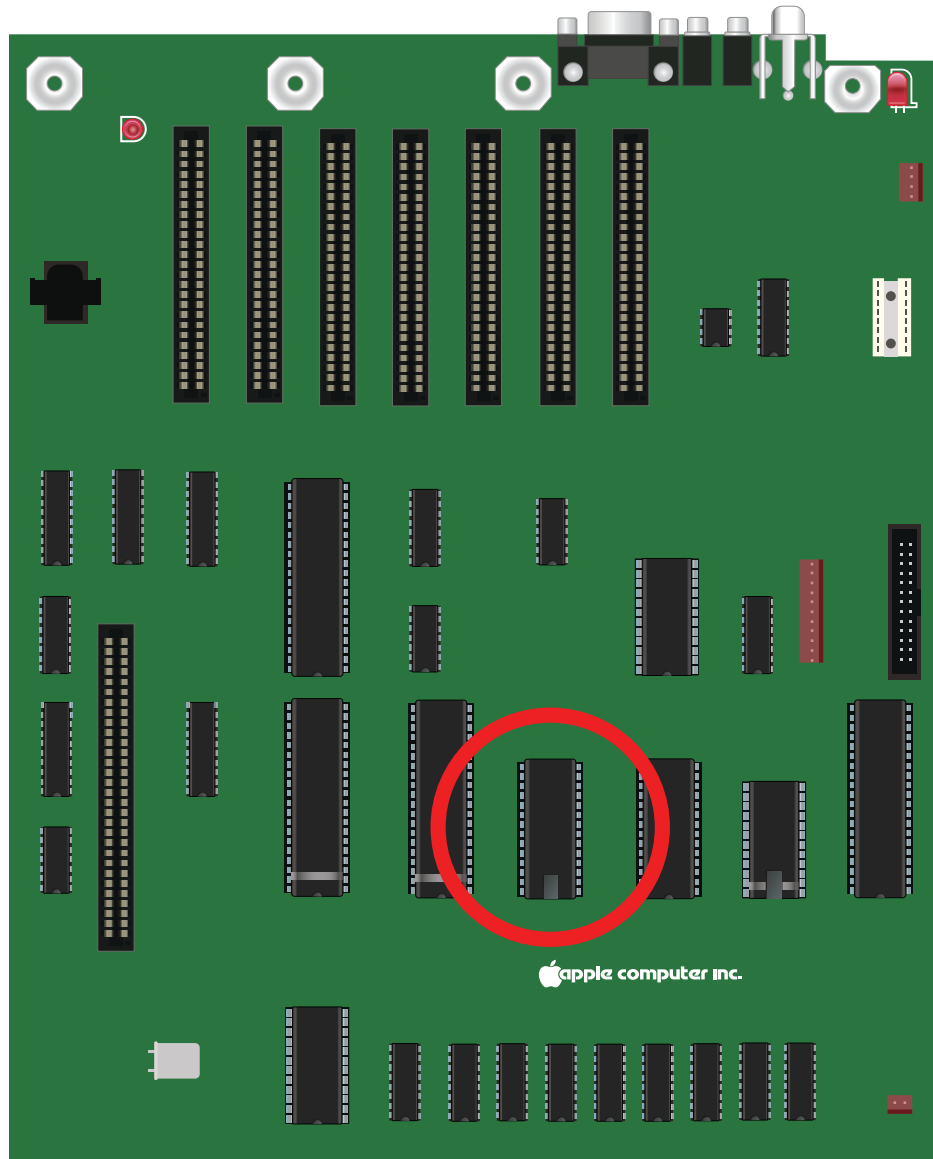
You are done!

Boot the NSC disk and set the Clock

Then install the ProDOS patch and it's ready to be used.
ProDOS will automatically time and date stamp your files.

Note: If your IIe is accelerated, the NSC software will not run correctly.
Be sure to disable any acceleration first, then set the Clock.

Apple //e Mainboard General Layout

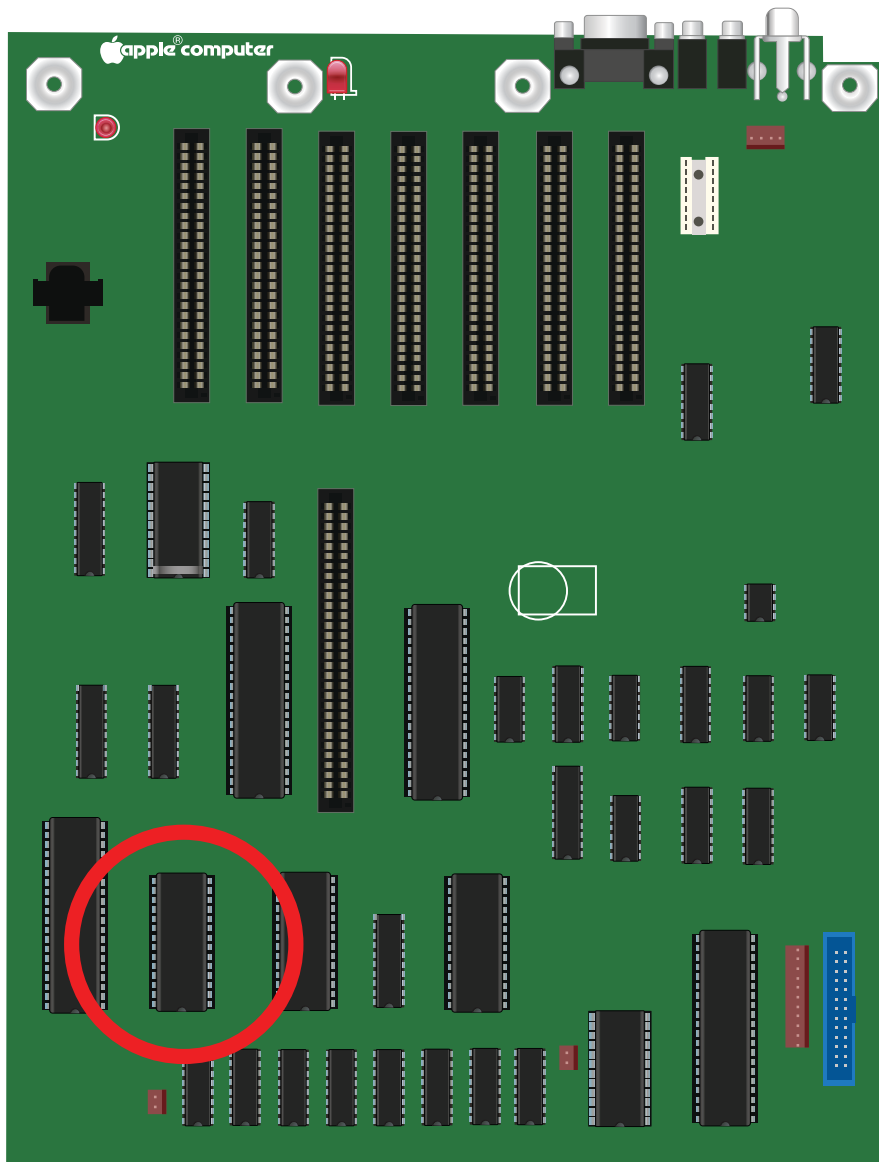


Remove “CD” ROM and Install Clock Chip Here.

This notch on the left side of the chip means PIN #1 and must be inserted back the same way.

On your //e, all notches are towards the keyboard.

Apple //e Mainboard General Layout (PAL)



Remove “CD” ROM and Install Clock Chip Here.

This notch on the left side of the chip means PIN #1 and must be inserted back the same way.

On your //e, all notches are towards the keyboard.

The No Slot Clock (NSC) will enable the Apple IIe to have a ProDOS compatible clock. It works by patching ProDOS to allow it to see the Clock.

Installation of the (NSC) requires that you remove the top cover of your Apple IIe. You will need an I.C. extracting tool, or small flat blade screw driver.

The NSC will be installed in the CF ROM socket at location “C66” on the mainboard. The existing ROM will be re-installed on top of the clock.

- 1) Remove the top cover of the case on your Apple IIe Personal Computer
- 2) Familiarize yourself with what you see: (see Mainboard Images - following pages)
- 3) Locate the “CF” ROM chip at location C66 on the mainboard
- 4) Being careful to not bend any pins, install the NSC into the empty socket (Watch for pin #1)
- 5) Re-install your “CF” ROM chip into the socket on top of the No Slot Clock (NSC), make sure to put the notch facing the keyboard and not to bend any pins. Push firmly to make sure everything is tight
- 6) Put top cover back in place on your computer.

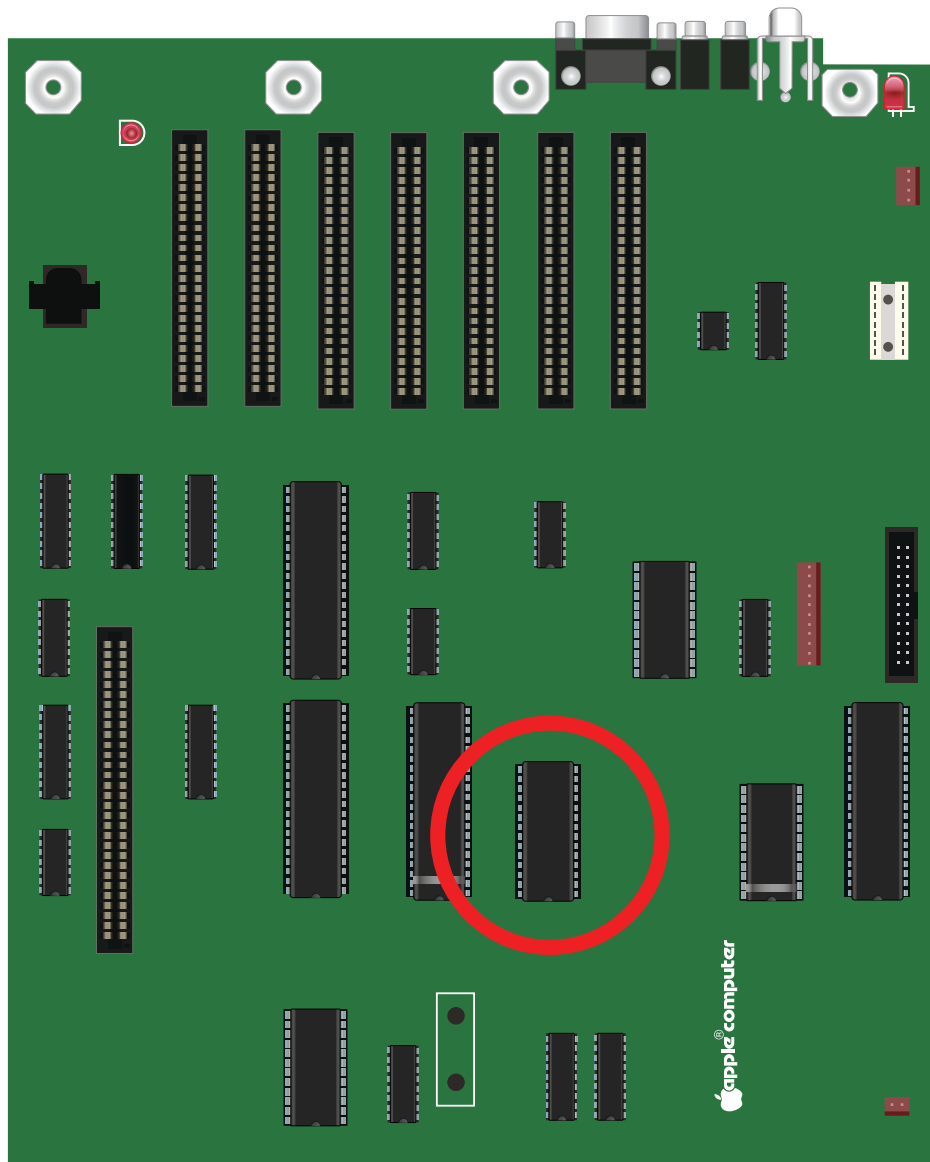
You are done!

Boot the NSC disk and set the Clock

Then install the ProDOS patch and it's ready to be used. ProDOS will automatically time and date stamp your files.

Note: If your IIe is accelerated, the NSC software will not run correctly. Be sure to disable any acceleration first, then set the Clock.

Apple IIe Mainboard General Layout



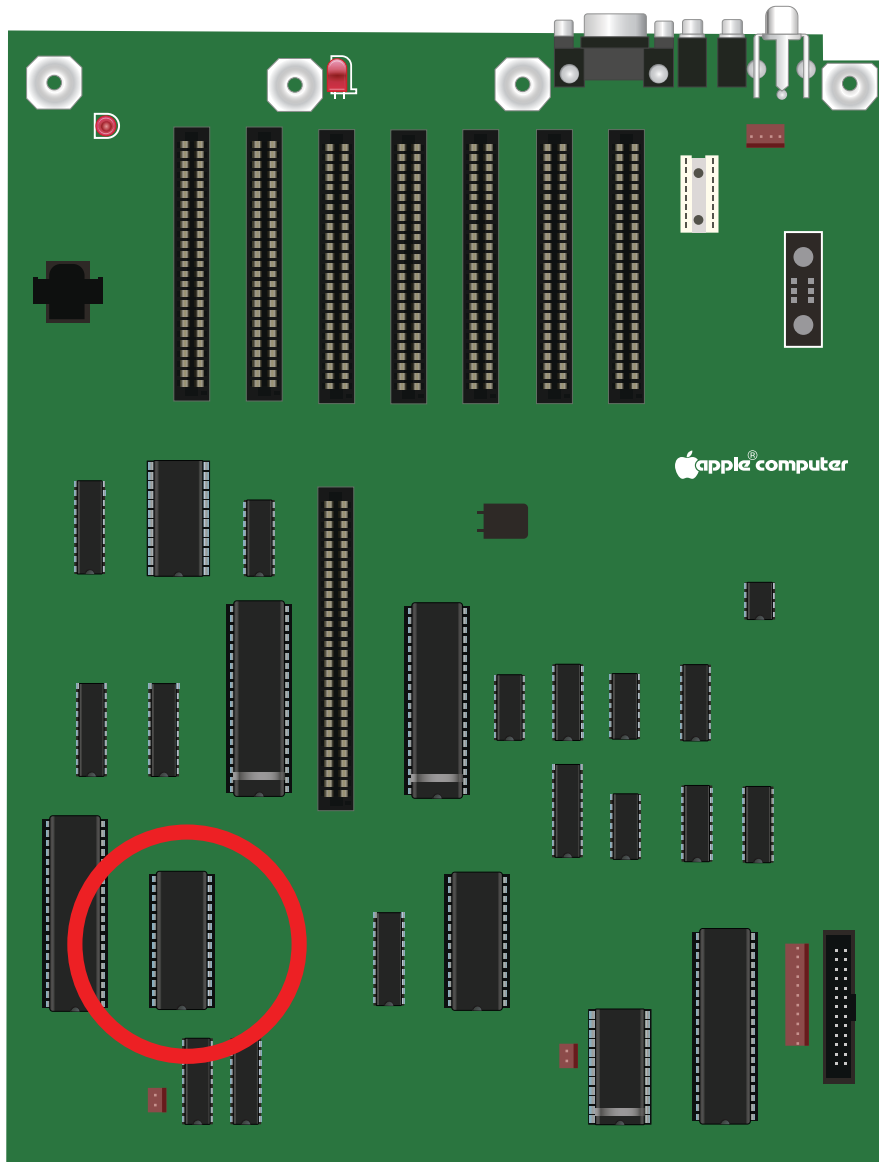
Remove CF ROM and Install Clock Chip Here.

This notch on the left side of the chip means
PIN #1 and must be inserted back the same way.

On your IIe, all notches are towards the keyboard.

Apple IIe Mainboard General Layout

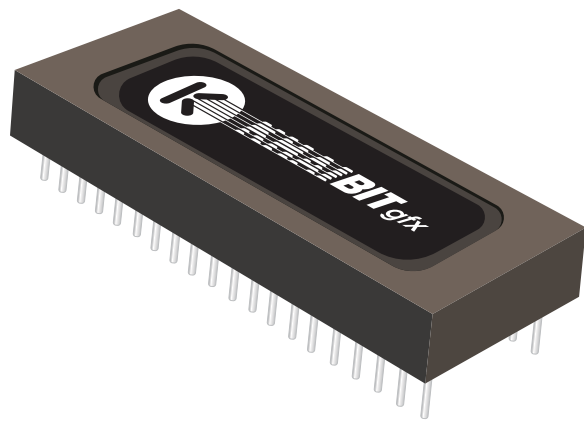
International NTSC



Remove CF ROM and Install Clock Chip Here.

This notch on the left side of the chip means
PIN #1 and must be inserted back the same way.

On your IIe, all notches are towards the keyboard.



Apple, the Apple logo, are trademarks of Apple Inc., registered in the U.S. and other countries.





www.reactivemicro.com